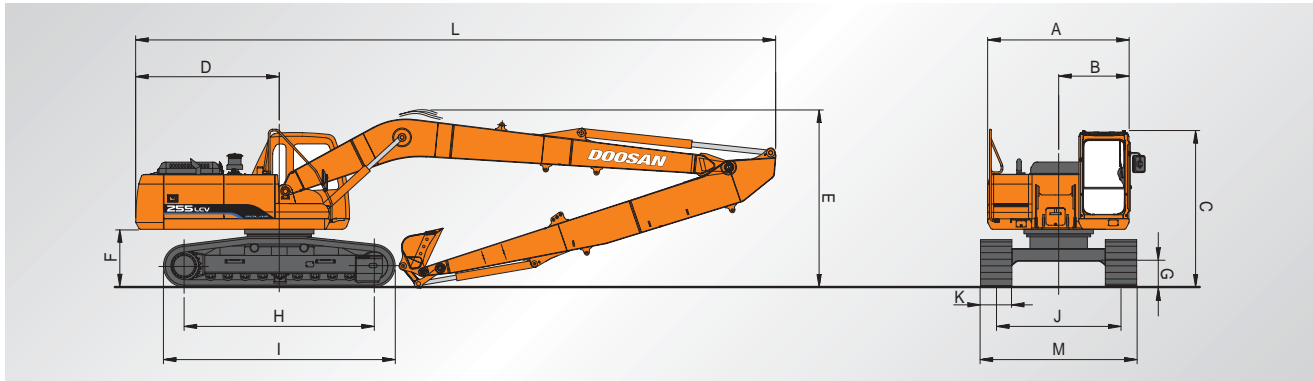


Dimensions (8.5m(27'9") Boom, 6.2m(20'3") Arm, 600mm(2') Shoe)



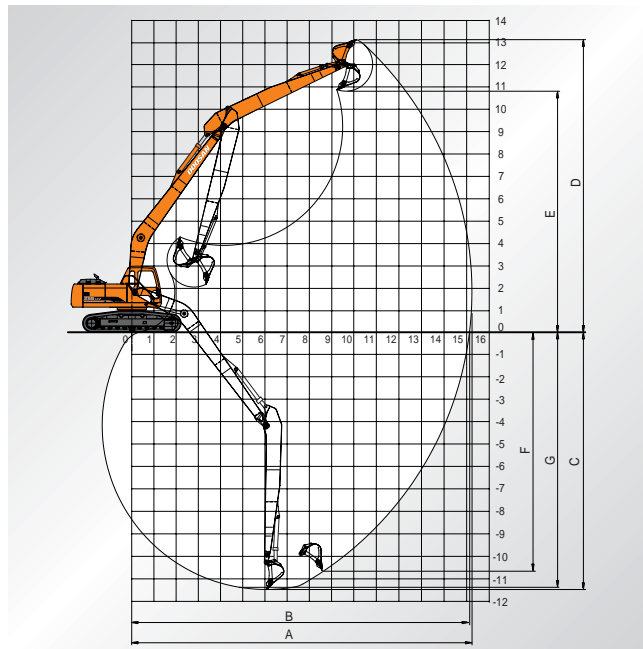
A Overall width of upper structure	2,710mm (8'11")
B Overall width of cab	1,350mm (4'5")
C Overall height of cab	3,000mm (9'10")
D Tail swing radius	2,750mm (9')
E Overall height	3,360mm (11')
F Clearance under counterweight	1,105mm (3'8")
G Ground clearance	480mm (1'7")
H Tumbler distance	3,645mm (12')
I Track length	4,440mm (14'7")
J Track gauge	2,390mm (7'10")
K Track shoe width	600mm (2')
L Overall length	12,260mm (40'3")
M Overall track width with 600mm (2') shoe	2,990mm (9'10")

Digging forces (Maximum radial tooth forces)

	6.2m (20'3") Arm
Bucket digging force *	8,400 kgf 82 kN 18,500 lbf
Arm digging force *	5,800 kgf 57 kN 12,800 lbf

*At power boost

Working ranges



Boom length	8.5m (27'9")
Arm length	6.2m (20'3")
A. Max. digging reach	15,390mm (50'6")
B. Max. digging reach at ground level	15,280mm (50'2")
C. Max. digging depth	11,650mm (38'3")
D. Max. digging height	13,250mm (43'6")
E. Max. dumping height	10,910mm (35'10")
F. Max. vertical wall digging depth	10,790mm (35'5")
G. Max. digging depth (8' level)	11,550mm (37'11")



Doosan Infracore
www.doosaninfracore.com

The illustrations do not necessary show the product in standard version.
All products and equipments are not available in all markets.
Materials and specifications are subjects to change without prior notice.

PBP S225C50S 0703

Seoul Office
Doosan Tower 27th FL. 18-12, Euljiro-6Ga,
Jung-Gu, Seoul, Korea 100-730
Tel : +82-2-3398-8114
Fax : +82-2-3398-8117

Doosan Infracore Europe S.A.
1A, Rue Achille Degrâce, 7080 Frameries, Belgium
Tel : +32-65-61-3230 Fax : +32-65-67-7338

Doosan Infracore U.K., Ltd.
Doosan House, Unit 6, 3 Heol Y Gamlas, Parc
Nantgarw, Nantgarw, Cardiff. CF15 7QU, U.K.
Tel : +44-1443-84-2273 Fax : +44-1443-84-1933

Doosan Infracore Europe S.A. Germany
Heinrich-von-Stephan str. 2 40764 Langenfeld,
Germany
Tel : +49-2173-2035-210 Fax : +49-2173-2035-219

Doosan Infracore France
ZAC de La Clef Saint Pierre - Buroplus 2 1A Avenue Jean
d'Alembert 78990 Elancourt, France
Tel : +33-(0)1-30-16-21-41 Fax : +33-(0)1-30-16-21-44

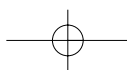
Doosan Infracore America Corporation
2905 Shawnee Industrial Way, Suwanee, Georgia
30024, U. S. A
Tel : +1-770-831-2200 Fax : +1-770-831-0480

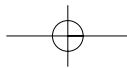
Doosan Infracore China Co., Ltd.
#28, Wuzhishan Road, Eco. & Tech, Development Zone, Yantai, Shandong, China
Tel : +86-535-638-2000 Fax : +86-535-638-2004

Doosan Infracore South Africa (PTY) LTD.
60C Electron Road, Isando 1600, Johannesburg, South Africa
Tel : 27-11-974-2095 Fax : 27-11-974-2778

Doosan Infracore Middle East Center (Dubai)
P.O.Box 183127, Al-Serkal Building, Air Port Road, Dubai, U.A.E
Tel : +971-4-295-2781~2 Fax : +971-4-295-2783

Doosan Infracore Latinamerica oficina (Colombia)
Dia gonal 127 A No. 17-14, oficina 302 Bogota, Colombia
Tel : +571-216-1655 Fax : +571-648-7700





Doosan Infracore
Construction Equipment

SOLAR225LCV SLR

Engine Power : DIN 6271,net 110kw(150ps)@1,950 rpm
SAE J 1349,net 110kw(148HP)@1,950 rpm

Operational Weight : 23,600 kg (52,023 lb)

Bucket capacity(PCSA) : 0.39m³(0.51 cu.yd)

